



8 July 2016

**DOH-CAR OFFICE PERSONNEL ORDER**  
NO. 2016 - 796

**SUBJECT: CREATION OF THE REGIONAL HEALTH SECTOR PERFORMANCE MONITORING UNIT**

Pursuant to Department Order No. 2016-0170, *Establishment of a Health Sector Performance Unit (HSPMU)*, the DOH-CAR Regional HSPMU is created with the following members and functions:

Chairperson	<b>LAKSHMI I. LEGASPI, MD, RN, MAN</b> , Director IV
Vice Chairperson	<b>AMELITA M. PANGILINAN, MD, MPH</b> , Director III
Senior Technical Staff	<b>VALERIE P. BANIWAS</b> , Statistician III
Provincial Technical Staff	<b>All DMOs</b> , DOH-CAR

**HSPMU Functions**

The main objective of the establishment of the HSPMU is to provide quality information on health sector performance as guide in improving program management, policy formulation, planning and resource allocation and decision-making. With this, the HSPMU is expected to carry out the following tasks:

1. Collect data from existing DOH and other agencies' information systems;
2. Check accuracy, consistency and validity of data being collected;
3. Consolidate or further process data as needed, analyze and translate them into report format acceptable to the intended recipients;
4. Alert concerned offices/units with performance below expected levels;
5. Inform the Regional Director/Assistant Regional Director of needed decisions / actions on certain performance levels at the regional level;
6. Monitor completion / implementation of actions/decisions made;
7. Organize dissemination activities of monitoring results/findings;
8. Participate in relevant DOH meetings/workshops concerning performance indicators being tracked;
9. Shall coordinate closely with the different divisions for monitoring and evaluation and DOH Retained Hospitals;



The round metal gong of the Cordillera known locally as "gangsá" is a symbol of the upland people's culture that has been passed on from generations to another.

The profile of a person blowing a "tanggyub" represents a community being called for an important matter or action.

The lines that shape the mountains, the rice terraces, clouds and rivers symbolize the connectivity and flow of human interaction in a geographic area such as the Cordillera.

All the symbols combined represent unity and harmony of its people with culture and environment in beating the gong for self determination.

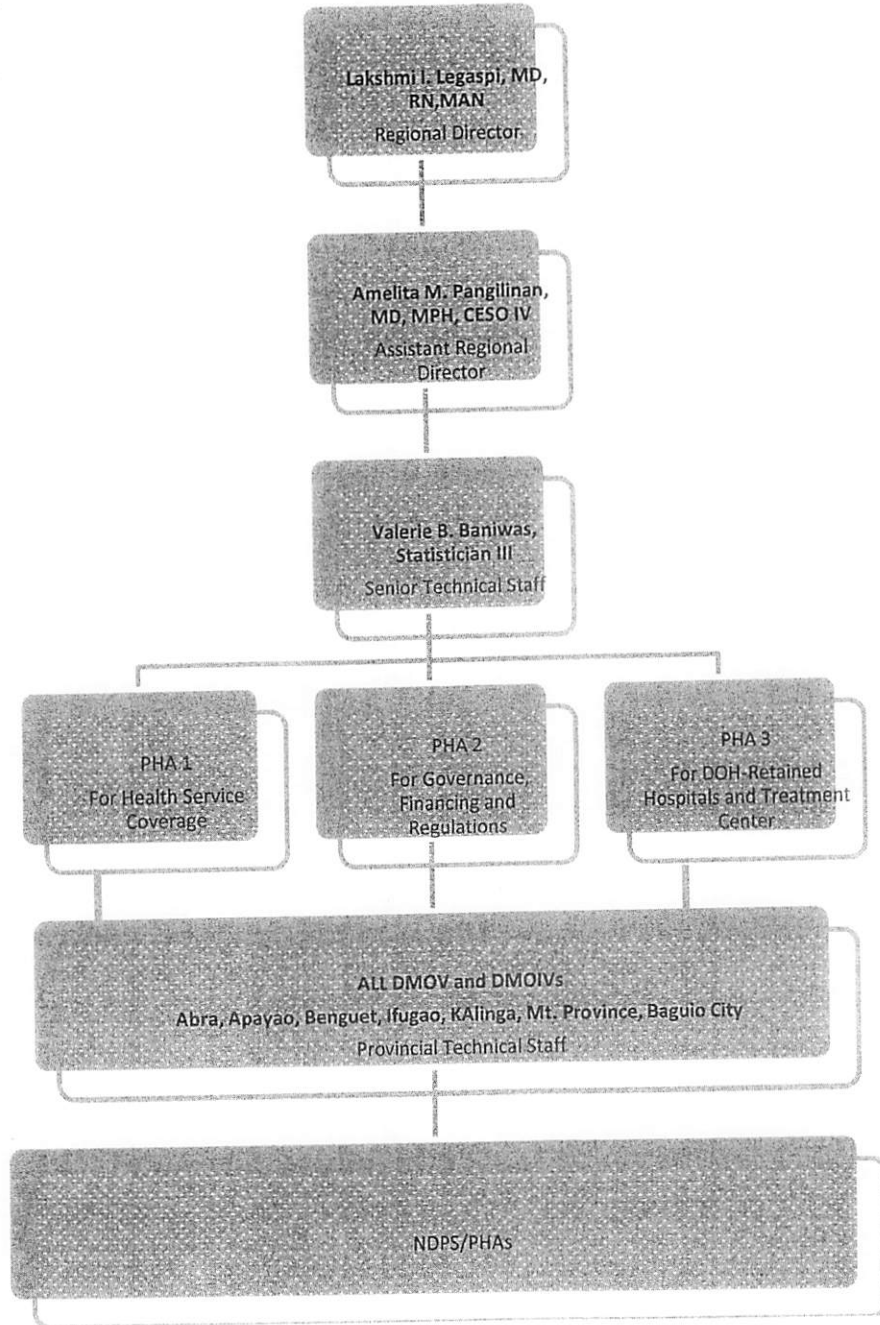


REPUBLIC OF THE PHILIPPINES  
DEPARTMENT OF HEALTH  
**Cordillera Administrative Regional Office**



BGHMC Compound, Baguio City 2600  
Tel./Fax Nos. (074) 442-8096 to 98 www.caro.doh.gov.ph

In addition, below is the **Organizational Support Structure of the HSPMU**, for the flow and delegation of tasks among the members:



The round metal gong of the Cordillera known locally as “gangsa” is a symbol of the upland people’s culture that has been passed on from generations to another.  
The profile of a person blowing a “tangguyub” represents a community being called for an important matter or action.  
The lines that shape the mountains, the rice terraces, clouds and rivers symbolize the connectivity and flow of human interaction in a geographic area such as the Cordillera.  
All the symbols combined represent unity and harmony of its people with culture and environment in beating the gong for self determination.



REPUBLIC OF THE PHILIPPINES  
DEPARTMENT OF HEALTH  
**Cordillera Administrative Regional Office**



BGHMC Compound, Baguio City 2600  
Tel./Fax Nos. (074) 442-8096 to 98      www.caro.doh.gov.ph

Under this Order, appropriate and allowable expenses incurred in the performance of the functions of the Committee shall be charged to any available funds of the office, subject to the usual accounting and auditing rules and regulations.

This Order shall take effect immediately and shall remain in force until it is revoked or amended.

  
**LAKSHMI I. LEGASPI, MD, RN, MAN**  
Director IV



The round metal gong of the Cordillera known locally as "gangsa" is a symbol of the upland people's culture that has been passed on from generations to another.  
The profile of a person blowing a "tanggyub" represents a community being called for an important matter or action.  
The lines that shape the mountains, the rice terraces, clouds and rivers symbolize the connectivity and flow of human interaction in a geographic area such as the Cordillera.  
All the symbols combined represent unity and harmony of its people with culture and environment in beating the gong for self determination.